

# Carmarthenshire PSB's Well-being Plan 2018-2023

## 3rd Annual Report

May 2020 – May 2021





## Contents

Foreword	1
PSB Well-being Plan	2
PSB Structure	3
PSB Areas of Progress	4
Additional projects progressed by the Delivery Groups	9
Regional Working	14
Links with the West Wales Regional Partnership Board	16
Five Ways of Working	18
Development areas for coming year	19

## Foreword

I am pleased to present the third annual report of the Carmarthenshire PSB following the publication of our Well-being Plan in May 2018. This last year has been an unprecedented and challenging time. Covid-19 has impacted on all of us – public services, businesses and our communities and we have come together to help people needing both practical and emotional support. Enhanced communication between our partner organisations has been critical to respond to the ever-changing landscape and impact on service delivery.

Public service partners have had a short-term focus on supporting the recovery from the pandemic and working together to develop plans for medium and long-term recovery. I firmly believe that this alliance has been assisted by the strong partnership relationships that exist, having been built over the years through the work of the PSB. We continue to share what we have learnt and will continue to learn from how we adapted whilst also looking at the opportunities to work collaboratively going forward, improving service delivery.

Many of our public services have been working differently, with staff working from home, meetings held virtually. As a PSB, we have continued to meet regularly to drive forward our important agenda – and with meetings held online, we have seen some positives, with significant reductions in travelling time and mileage, the impact on the environment has been beneficial, and we will continue to consider how best to work effectively in the future.

The PSB brings together senior representatives from public services working in Carmarthenshire to improve the economic, social, environmental and cultural well-being of our residents. We work together to add value to each other's services and there continue to be huge opportunities to develop innovative approaches, learning from our experience over the last year. We are working to address what may not have seemed possible before, different ways to meet the needs of our communities. The work of our Delivery Groups is ongoing, progressing work collaboratively to implement key actions to meet the Board's objectives. Partners are looking at how we can do things differently and build on local engagement with our communities.

I am proud of the recent collaborative efforts, despite the challenging circumstances, and being able to say that we are starting to make some real progress in Carmarthenshire, working to reshape public services for the better. This annual report outlines many of our key achievements over the last year, a year which has reinforced the importance of public services to our day to day lives.

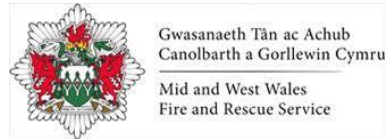
Once again, I thank all those involved who continue to do all they can to deliver our Well-being Plan. By working together, we will continue to see how we can make a better future for our future generations.

**Barry Liles, Chair of PSB & Pro Vice-Chancellor (Skills & Lifelong Learning), University of Wales Trinity Saint David**



## PSB Well-being Plan

The Plan outlines how the PSB partners will work together to address some of the key issues affecting the well-being of the citizens and communities of the County. These partners are:



The Plan focuses on the delivery of four well-being objectives, identified following extensive engagement with frontline staff, residents and other key stakeholders:



**Healthy Habits** – People have a good quality of life and make healthy choices about their lives and environment



**Early Intervention & Prevention** – To make sure that people have the right help at the right time; as and when they need it



**Strong Connections** – strongly connected people, places and organisations that are able to adapt to change

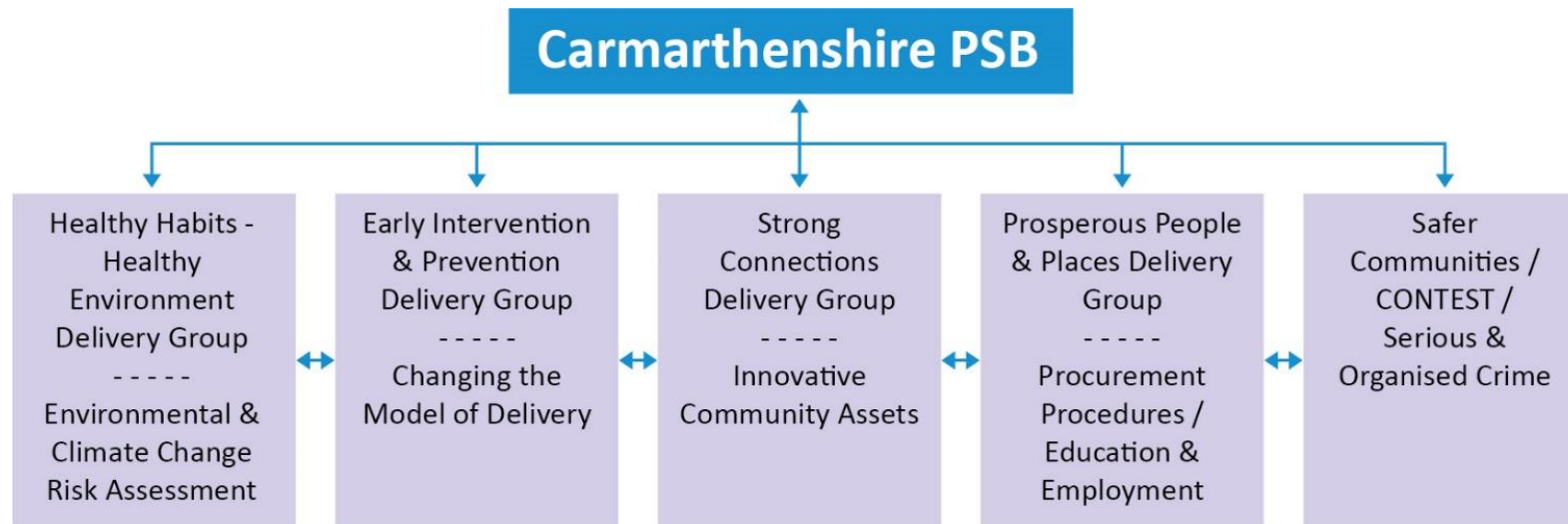


**Prosperous People and Places** – To maximise opportunities for people and places in both urban and rural parts of our county.



## PSB Structure

The structure in place has been developed to ensure the effective delivery of the Well-Being Plan. This consists of a series of Delivery Groups in order to make progress against the short-term actions within the PSB's well-being objectives. Each group has an Expert Lead, Vice Chair and Lead Officer.



The Delivery Groups have been meeting since mid-2018 and have, in the last year, been progressing their project plan to deliver against the Well-being Plan. These Delivery Groups are administered by the Council's PSB Support Team and the team also acts as a conduit between the Delivery Groups in order to identify areas of possible collaboration and avoid duplication.

The Safer Communities Partnership, a statutory, long-standing multi-agency group, continues to be accountable to the PSB and reports on a regular basis to the Board. It meets on a quarterly basis and is fully aligned with two other county-based groups linked to community safety – the CONTEST (counter-terrorism) Board and Serious Violence and Organised Crime Board. Information about the work of these groups is included later in this report.

The PSB structure will be regularly reviewed to ensure that it best supports the Board's work, including the delivery of progress against the Well-being Plan.



## PSB Areas of Progress

Several areas have been progressed or supported by the PSB, in addition to the work done by the Delivery Groups to meet the PSB's objectives:



The on-going collaboration taking place with the seven Carmarthenshire Town and Community Councils subject to the Well-being of Future Generations Act continues to develop and benefit from closer working. Representatives from those councils (Llanelli Town, Llanelli Rural, Pembrey and Burry Port, Llanedi, Llannon, Cwmaman and Carmarthen) now attend each PSB meeting as a voice for the town and community council sector. The PSB Support Team have continued to work with the Clerks and Development Officers of the councils during the year. Regular discussions with these local councils have enabled greater collaboration in locally led initiatives which will continue going forward. During the year the councils have worked with the PSB on a tree planting project, funded through NRW (further information available in the Healthy Environment Delivery Group

update). Under the Well-being of Future Generations Act, the councils are required to report on progress made in meeting the local Well-being Plan's objectives. The local councils presented their annual reports at PSB meetings during the year. A number of issues and initiatives were raised by partners during these discussions and links made for future development and collaboration. Going forward, it has been agreed that an annual event will be held with the Town and Community Councils to identify good practice and share annual reports.

Significant progress has been made by PSB members working collaboratively to further develop the ongoing work with partners and the community to regenerate the Tyisha ward in Llanelli. This ward is one of the most deprived communities in Carmarthenshire and partners have developed a transformational plan to address this deprivation and the priorities identified by the community including community safety concerns, the social and physical environment. This work links to the development of other planned initiatives in the area such as regeneration of the town centre and the development of Pentre Awel, the Life Science and Well-being Village.

Over the last year, initiatives have included:

- Recruitment of two dedicated community wardens to tackle anti-social behaviour, encourage neighbourhood watch schemes and promote cohesion, two dedicated housing officers to lead on issues involving Council tenants and promote community engagement and a project development officer to engage with young people and focus on delivering a new hub for the area.

- Embedded four dedicated workstreams - Crime and Disorder, Housing and Regeneration, Environment and Transport, and Children, Families and Communities – to lead on various aspects of the project
- Supported the set-up of a new foodbank for the area
- Developed new family housing for the area and improved other stock
- Decanted a number of tenants living in the redundant Ty's blocks and provided them with alternative and more suitable accommodation.
- Moving both youth projects out of the area and finding a range of different options which will provide more opportunities and aspirations.
- Decommissioning and recommission our temporary accommodation and looking to disperse units across Llanelli rather than confined to one area.
- Improving housing standards in the Private Rented Sector with a dedicated Environmental Health Officer undertaking proactive and reactive work and leading on public health, noise, and waste complaints
- Working with private landlords to set up a forum to build relationships and improve communication
- Assisting residents of Tyisha in conjunction with Dyfed Powys Police in setting up two Neighbourhood Watch Schemes, with the aim to build safer communities and helping to prevent crime
- Dedicated waste team cleansing the rear lanes and streets improving the environment and taking enforcement action where needed.



A workshop is being planned for PSB partners across the region to progress opportunities for collaboration regarding carbon reduction. This follows the Council's declaration of a Climate Emergency which commits to make the Council a net zero carbon local authority by 2030 and to work with the PSB to develop opportunities to make carbon savings. The workshop will outline current and planned activity within partner organisations to respond to climate change and facilitate discussion around future joint working.

The PSB has reviewed its priorities following extensive discussions during the year to consider opportunities arising from the lessons learnt from organisations' experiences of dealing with the coronavirus pandemic and the enhanced collaborative working that developed as a result. As a result of the challenges faced, partners discussed opportunities to rethink how they work together and how services are delivered.

The following priority projects going forward were identified to ensure future action by the PSB focuses on agreed key collaborative opportunities and supporting the county's recovery:

<b>Well-being Plan Objective</b>	<b>Project</b>
<b>Healthy Habits</b>	<ul style="list-style-type: none"> <li>• Social &amp; Green Solutions for Health (regional and link to RPB)</li> <li>• Environmental Risk Assessment</li> <li>• Newcastle Emlyn Climate Resilience Plan</li> <li>• Opportunities for collaboration to respond to climate emergency</li> </ul>
<b>Early Intervention &amp; Prevention</b>	<ul style="list-style-type: none"> <li>• NEW Focus on developing means of sharing organisational intelligence on vulnerability in order to build a better profile of needs in Carmarthenshire to plan and focus service provision. Building on work being undertaken by Dyfed Powys Police through the Serious Violence &amp; Organised Crime Board.</li> </ul>
<b>Strong Connections</b>	<ul style="list-style-type: none"> <li>• Volunteering (link to RPB)</li> </ul>
<b>Prosperous People &amp; Places</b>	<ul style="list-style-type: none"> <li>• Work with Regional Learning &amp; Skills Partnership to further develop areas of priority for Carmarthenshire going forward</li> <li>• Public sector procurement – initially through the Foundational Economy Challenge Fund project</li> <li>• Progressive procurement regional cluster with Pembrokeshire, Swansea and Neath Port Talbot</li> </ul>
<b>Safer Communities</b>	<ul style="list-style-type: none"> <li>• Work towards compliance with Counter-Terrorism duties by partners ensuring appropriate staff training provided</li> <li>• Continue to develop partnership working to tackle serious organised crime including County Lines activity</li> <li>• Develop usage of 'Internet of Things' technology to tackle local crime and disorder problems</li> <li>• Raising awareness of cyber crime among partners</li> <li>• Learning from themes identified by domestic homicides</li> <li>• Work to bring together communities while identifying any tensions affecting community cohesion</li> </ul>
<b>Collaboration opportunities</b>	<ul style="list-style-type: none"> <li>• NEW Multi-agency/multi-sector town centre or community hub developments – as we ease out of working from home arrangements, there is a need to establish new ways of working by reducing the need for numerous organisational headquarters and look at opportunities to develop a multi-agency approach to more localised community access to services, agile working areas for staff and/or locations for outreach staff to touch-base without having to return to main office.</li> <li>• 10 rural towns</li> <li>• Tyisha regeneration programme</li> <li>• Well-being Assessment</li> </ul>



The two new priorities agreed were multi-agency/sector town centre or community hubs and developing information sharing arrangements to enable organisational intelligence on vulnerability to be better utilised.



## Circular Economy Innovation Communities

The PSB promoted the initiative, '**Circular Economy Innovation Communities**' to its members, encouraging participation of managers and leaders of public services and third sector organisations in a 10-month programme run by Swansea University. The Welsh Government- funded programme aims to assist teams to support the development of new service solutions to enhance productivity and deliver Circular Economy benefits by keeping resources and materials in use for as long as possible and avoiding all waste. There are seven cohorts across the Swansea Bay region including one consisting of Carmarthenshire PSB partners working on the town centre hub initiative which will complement the ongoing partnership work.

A presentation was given to the PSB in July 2020 on the **Swansea Bay City Deal's Digital Infrastructure programme**. Many PSB partners have been involved in the conception of this £55 million programme which has now received Ministerial approval from both the UK and Welsh Governments. Delivery of the individual projects within the programme will now begin and take place over the next four years. These projects include interventions to improve rural digital connectivity, investment in full fibre infrastructure across urban and economic growth zones and investment in next generation wireless networks across the region. PSB partners will be invited to participate in the next step which will be workshops to develop the specific details of the individual interventions.



The PSB has also been kept informed of latest developments and opportunities relating to the significant **Pentre Awel** project being taken forward in Llanelli. Many PSB members, including the Health Board, University and Coleg, are already directly involved in the project being led by the Council as part of the **Swansea Bay City Deal**. Progress achieved during the year means that £40million of Swansea Bay City Deal funding can be drawn down to help deliver the landmark scheme on the 83-acre site at Delta Lakes, Llanelli. Pentre Awel will be the first development of its scope and size in Wales and will bring together life science innovation, community healthcare and modern leisure facilities all at one location along the Llanelli coastline. The research and development will help to push the boundaries of understanding of what it means to live well. Pentre Awel will be home to big science and small start-ups, established businesses and new kids on the block. All working in partnership with universities and colleges and the health board to make life better. The

exciting project includes integrated care and physical rehabilitation facilities to enable the testing and piloting of life science technologies aimed at enhancing independent and assisted living. A well-being skills centre will focus on health and care training, along with a clinical delivery centre to deliver multi-disciplinary care closer to home. The new leisure centre will bring state-of-the-art sports and fitness facilities to the people of Llanelli and the surrounding area with include a 25-metre eight-lane swimming pool, new top-of-the-range gym, eight-court sports hall and an adventure play area for young children. The development will bring a wide range of employment opportunities creating almost 2,000 jobs including apprenticeships and is expected to boost the local economy by a staggering £467million.



The PSB began to consider the implications of a number of key strategic documents published during the year and these discussions are ongoing.

These have included:

- **‘Review of Strategic Partnerships’** by the Welsh Government and Welsh Local Government Association – this review considered the broad partnership landscape and identified key areas where there was felt to be unnecessary complexity or duplication, working with partners to identify opportunities for simplification and rationalisation. The review identified action which could be taken immediately by the relevant partnerships or Welsh Government to rationalise partnerships/improve alignment and action which would require legislative change through the Local Government and Elections Act.
- **‘Future Generations Report 2020’** by the Future Generations Commissioners – this report is the first of its kind, meeting the statutory duty on the Commissioner to publish this report every five years. The report analyses the progress of all public bodies, including Welsh Government, in implementing the Well-being of Future Generations (Wales) Act since it became law in 2015. A workshop is to be planned to further consider the Commissioner’s report.
- Senedd’s Public Accounts Committee’s Report **‘Delivering for Future Generations: The story so far’** - this inquiry focused on the barriers to implementation of the Well-being of Future Generations (Wales) Act 2015 and how it can be implemented successfully in future.

## Additional projects progressed by the Delivery Groups

Although the Delivery Groups have not been able to make as much progress as was hoped due to the pandemic, with some of the groups not being able to meet during the year due to officers being focused or redeployed to support COVID-19 response, a number of projects have been developed and progressed.



A priority for the **Healthy Environment Delivery Group** continues to be to tackle climate change. The regional work on severe weather events commissioned by NRW, working closely with the PSBs in Carmarthenshire, Ceredigion and Pembrokeshire, in 2019, resulted in a more targeted approach focusing on two of the identified at-risk communities - Newcastle Emlyn in Carmarthenshire and Fishguard in Pembrokeshire. This work was commissioned in February 2020 and was completed in December. The project involved online engagement with key stakeholders to develop a plan for building climate resilience through identifying the direct impact of climate risks on their situation and place and seeking their responses on how to build resilience. The final report, its findings and recommendations have been considered by the Delivery Group and recommendations will be put forward to the PSB for consideration.



The PSB was awarded £25,000 from NRW to deliver projects linked to the Well-being Plan before the end of March 2021. The Delivery Group put forward two projects which were approved by the PSB and then successfully delivered:

- 1) a tree planting initiative, led by the seven town and community councils, engaging safely with local community members getting involved in the planting, benefitting from spending time in natural spaces and improving residents' ownership of, and sense of pride in, their communities. Almost 2,350 trees were planted with eight new woodland and tree planted sites created. Four community groups were established or enhanced, who are now working with the town and community councils in the long-term management of the new and existing green spaces. This project was later expanded to include habitat improvements following an underspend on the second project – a Green Infrastructure (GI) initiative - due to the delivery timetable.
- 2) investigating how GI can be incorporated into the redevelopment of Jackson's Lane, Carmarthen to address key issues such as air quality, health and well-being, and climate resilience, as well as economic regeneration and green recovery from Covid-19, and also in Newcastle Emlyn town centre, with the aim of maximising climate resilience, economic regeneration and health and well-being. Moving forward, stakeholder workshops will be held with participants, identified from the stakeholder database, to discuss the initial findings of the report. This knowledge gathering and sharing will then be used to finalise a GI masterplan for each site which will inform the future development.





The **Strong Connections Delivery Group** made a successful partnership bid to the Welsh Government Coronavirus Recovery Grant for Volunteering for £152,991.45 to progress priorities identified, including a - Carmarthenshire Volunteering Strategy, an online portal for volunteers/volunteering and digitising training. The funding will be used to sustain volunteering and community action witnessed throughout the pandemic and to ensure more sustainable models of volunteering moving forward. The work will include mapping existing volunteering provision across PSB partners, developing a crisis response plan and investigating ways in which volunteers can be shared across partners and third sector groups, exploring opportunities for shared processes such as recruiting and training volunteers and establishing a framework for local Volunteering Teams.



The **Safer Communities Partnership** continues to be involved in successful work to tackle 'County Lines' including the sharing of information and participating in campaigns such as targeted weeks of action. County Lines is a term used for illegal drug-dealing networks, usually controlled by a person using a telephone number – the 'county line'. They distribute drugs via 'runners' who are vulnerable children and adults recruited to transport drugs and cash all over the UK. This crime is often associated with other serious crimes such as sexual exploitation, violence, money laundering and human trafficking.



A new 'INTACT' Strategy for 2021-24 has been developed by partners to tackle Serious Violence and Organised Crime across Dyfed Powys. A work plan has been produced, information and awareness sessions arranged for staff of partner organisations and clear prevention messages are being promoted widely to the public, with a new theme per month. A new Early

Intervention and Prevention Team started in April consisting of 10 community support officers across the region and an analyst. This team aims to prevent children, young people and vulnerable adults from engaging in, or becoming victims of Serious Violence and Organised Crime. The team will develop and deliver early intervention activities, identifying opportunities for diversion activities, undertake targeted vulnerability patrols and support partners when working with young people.

Partner organisations are working closely together to tackle the drug, alcohol and anti-social behaviour issues in Tyisha, aiming to make the area a safer place to live. A survey has been completed by 217 residents in Tyisha – 10% of households - to give information on how they feel about policing, reassurance and safety in their neighbourhood. The results are being analysed and an action plan will be developed to tackle local concerns.

Two community wardens have been recruited by the Council and are working in Tyisha and Glan-y-môr to provide reassurance and support to the local community and raise awareness of crime prevention measures. The community wardens are setting up Neighbourhood Watch schemes and are working with partners to reduce crime relating to drug and alcohol use and to tackle anti-social behaviour including the use of CCTV and video doorbells provided by the Safer Communities Partnership using Home Office 'Safer Streets' funding secured through the Dyfed Powys Police and Crime Commissioner. The Council are also working in partnership with neighbourhood policing teams and local housing associations to tackle anti-social behaviour within tenancies and deliver robust action plans to prevent it from reoccurring.

Funding from the Police and Crime Commissioner has been used to support two initiatives. The first contributes towards a project which uses the 'Internet of Things' and LoRaWAN technology to tackle local crime and disorder problems. This is part of a wider project to develop a network of SMART towns across the county which aligns with current work across the ten rural towns focusing on economic growth. Gateways are being installed in our rural towns - St Clears, Whitland, Laugharne, Llanybydder,

Llandovery, Newcastle Emlyn, Llandeilo, Cwmmamman, Kidwelly and Cross Hands – and Ammanford and Burry Port. SMART towns use different types of electronic methods and sensors to collect data. Insights gained from that data are used to manage assets, resources and services efficiently; in return, that data is used to improve the operations across the town. This joint pilot project is to be funded by the county's Local Action Group, Grŵp Cefn Gwlad, who are responsible for the delivery of the LEADER programme, as well as Valley's Taskforce Programme.

The second project is a partnership between the Council's Trading Standards team and Police Rural Crime Team to protect our rural farming communities. 'No cold calling' signs have been purchased to be put on farm gates to help prevent burglary by acting as a deterrent for potential offenders. Support and advice are also being given to farmers on security.





Although the **Prosperous People and Places Delivery Group** has not been able to meet during the year, progress has continued to be made.

### **Foundational Economy Challenge Fund project looking at public sector food procurement**

The PSB secured £100k funding to take this project forward which focused on two key elements, those being public sector procurement arrangements and local food supply chains. Despite the challenging circumstances it was felt even more important to progress this work as part of the economic recovery planning and development work. The Centre for Local Economic Strategies (CLES) were commissioned to work with the Council, Health Board, University and Coleg to review current procurement arrangements and food spend/supply. Due to the pandemic the remit of the work for the Council was extended to cover all procurement spend areas. The findings and recommendations of the CLES work have been considered and approved by the PSB partners involved in the project with a view to embedding progressive procurement across those organisations. As part of the second element of the project looking at local food supply chains, the project engaged with two food experts to better understand the supply and demand challenges facing the food sector and to consider ways of addressing these going forward. Two stakeholder events were held in March, both as virtual meetings that attracted a significant amount of interest and generated a lot of discussion and ideas for further for development. The first session was focused on setting the strategic direction and outlining the opportunities for innovation through public sector collaboration and the second event was focused on the supply and production side of things in order to consider opportunities for local development of the supply chain in order to potentially fulfil public sector requirements.



Securing the dedicated funding has enabled the PSB to bring the key stakeholders together and outline the possibilities for development, giving a practical way forward for partners to work together. Further work will be taken forward within the PSB partners on the procurement and economic recovery elements and discussion are on-going, with opportunities for further project development on the food supply chain of things. The PSB project has opened the door on a number of significant opportunities in this area of work and these will be progressed over coming months.





## Skills

Regular updates have been provided to PSB partners from the Regional Learning and Skills Partnership on the impact of Covid-19 on the economy of Carmarthenshire. Labour market data is analysed regularly to provide information regarding the economy, labour market, people and skills and bi-monthly data is provided to the Welsh Government. Information received directly from local businesses is also considered in analysing the effects of the pandemic. Updates have been provided on levels of furloughed workers, claimant levels, take up of the Self-employment Income Support Scheme, redundancy rates, vacancies data, areas of growth and demand and skills demands. Consideration has been given to how the Carmarthenshire statistics compare to other areas in the region, Wales and the UK. The main findings relating to skills by sector has shown a demand for IT skills across all sectors due to the new ways of working.

Issues discussed by the PSB have included the effect on young people, impact on apprenticeships and opportunities for developing engineering apprenticeships, the significant increase in claimant levels of Universal Credit and Job Seeker's Allowance, although proportionally the increases seen in the county and region are lower than those seen across Wales and the UK and the increased demand for skills in certain sectors.



The **Early Intervention & Prevention Delivery Group** has unfortunately not been able to meet during the year due to key members of the group from Public Health Wales and the Health Board focusing their whole attention, rightly so, on responding to the pandemic. It is intended that progress on priorities such as developing the Social and Green Solutions for Health initiative will be a priority for 2021-22 as this will be a key area as part of COVID-19 recovery.

Carmarthenshire County Council in partnership with Hywel Dda University Health Board, supported by the PSB, successfully secured funding through the Early Years Integration and Transformation Programme – Pathfinder Co-production Grant in February 2020. The grant aims to develop integrated working across professions and organisations working with families during the early years of their children's lives. The funding enabled a dedicated officer to lead on the strategic development of Early Years Integration through the development of a Regional Maternity and Early Years Strategy and associated Operational Plans. Welsh Government have allocated this funding for 2021/2022 to continue this work.

This 2020/21 funding also enabled the setting up of the Pilot Cwm Gwendraeth Early Years Integration Team. All staff funded via this grant – an Early Years Integration Co-ordinator, Performance and Finance Officer, Community Connector and two Family Support Workers - were recruited into the team by September 2021 and the team became fully operational. Health Visitors and Midwives also form part of the team structure. The team have been testing innovative ways of working with families during the pandemic by developing a dedicated webpage for Cwm Gwendraeth Families and an app for accessing information alongside virtual delivery of programmes. The Team are also testing ways of working across Health, Family Support and third sector partners that will improve the early identification of need and the quality of referrals being made to various agencies. This funding has been confirmed in principle to continue for a further year to end of March 2022.

## Regional Working

There have continued to be significant developments in working regionally during the last year:

1. between PSB lead officers from Carmarthenshire, Ceredigion and Pembrokeshire,
2. with the three PSBs and West Wales Regional Partnership Board (RPB),
3. a joint Regional meeting of Carmarthenshire, Ceredigion, Pembrokeshire and Powys PSBs and the RPBs for West Wales and Powys in November 2020.



### PSB lead officers

The close working with the PSB leads for Ceredigion and Pembrokeshire has continued with regular meetings held between the officers and the main areas of work during the last year have been:

- ongoing development of the innovative regional Digital Information System jointly commissioned by the three PSBs using regional funding from Welsh Government and with a contribution also from the West Wales RPB's Transformation Fund. The RPB is also involved in the ongoing development and implementation of the system. The online platform is near completion – testing commenced at the end of April 2021 and the system is expected to go live by June 2021. The system will help with future well-being assessments, assessing performance, reporting arrangements and engagement opportunities. It will provide a central repository for all PSB members, stakeholders and citizens to the ongoing recording and analysis relating to well-being. The system aims to bridge the five-year gap between the publication of the assessments, to ensure that information on well-being is continuously utilised as and when new evidence is made available.
- the agreement of a joint approach again to undertaking the Assessment of Local Well-being. As previously, each PSB will again produce its own Well-being Assessment, completed by May 2022, dovetailing where possible with the process for the RPB's Population Needs Assessment, but these will be developed using a consistent methodology across the region. A regional working group has been established and has produced a Joint Methodology Framework between the PSBs which outlines this collective approach. It sets out how the Boards will work together across the four stages (data review, analysis, engagement and next steps), the different types of groups to be engaged with and the types of engagement techniques that will be

used. A Regional Engagement Framework is being developed which will outline the approach to conducting engagement and consultation on the assessment.

- The three PSBs have been successful in bidding to the Welsh Government to utilise its regional allocation of funding for a Project Coordinator to assist with the preparation and production of the Assessments of Local Well-being. Ceredigion County Council will lead on managing the Project Co-ordinator post on behalf of the three PSBs.

- The three PSBs have applied, as a cluster, to benefit from support in relation to their implementation of co-production and involvement, with an initial focus on well-being assessments from Co-production Network for Wales. The Co-production Network has secured 5 years of funding from the National Lottery Community Fund to work with three PSBs or a cluster of PSBs, building on the first round of well-being assessments to deepen engagement and involvement practice. It is hoped that the application will be successful with the work beginning in June 2021.





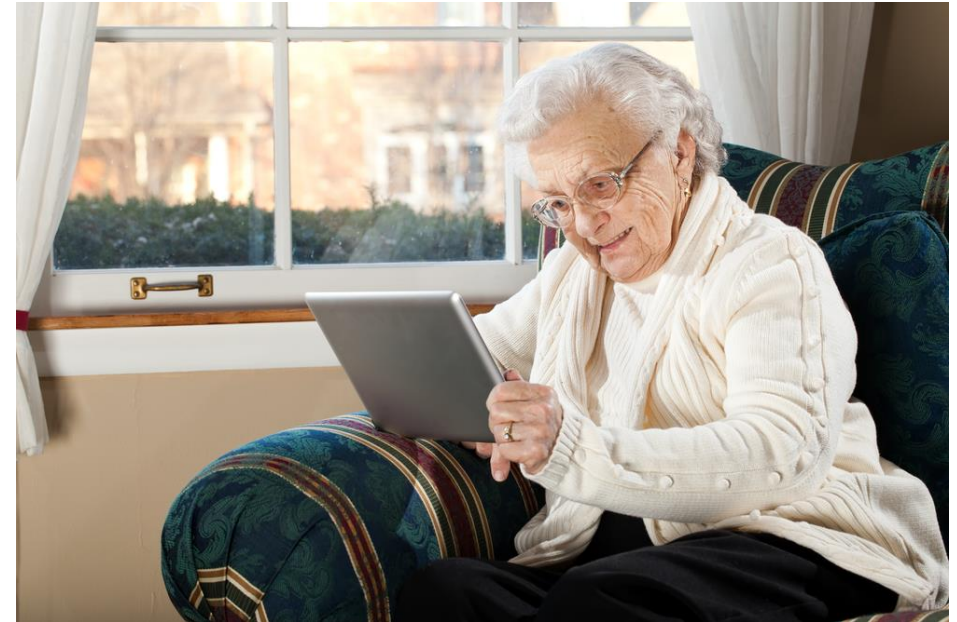
## Links with the West Wales Regional Partnership Board



The Head of Regional Collaboration, as the Regional Partnership Board (RPB) officer lead, is a member of the PSB and provides regular updates to PSB meetings on the Healthier West Wales Transformation Programme and the wider work of the Partnership. These updates particularly focus on the areas where there are clear links between the priorities of both Boards to ensure close alignment. Discussions are taking place to collaboratively progress projects receiving Welsh Government Transformation Fund money which support PSB objectives such as the promotion of volunteering and resilient communities, engagement with our communities and social and green solutions for health.

Specific discussions have taken place this year relating to the 'Proactive Technology – Enabled Care' (Connect) and 'Creating Connections for All' Programmes. The 'Connect' programme provides proactive care for people, using appropriate technology to promote and support chronic condition management, reduce loneliness & isolation, reduce hospital admissions & use of emergency services and 'Creating Connections for All' is engaging with communities to develop health and well-being.

Regular meetings continue to take place between the PSB leads for Carmarthenshire, Ceredigion and Pembrokeshire with the Head of Regional Collaboration to progress collaborative working.



Specific areas of integrated working which have continued to be progressed during the last year included:

1. citizen engagement arrangements at regional and locality level – the Health Board is co-ordinating this work to develop a public sector approach to involvement and engagement. Following discussion with PSB partners on collaborative opportunities to engage with our communities, the Health Board have commissioned digital systems that can support greater citizen engagement. A number of PSB member organisations are involved in the project with a view to creating a consistent engagement approach across a number of different public sector bodies. It is planned to use the 'Engagement HQ' platform during the engagement phase of the Well-being Assessment.
2. the development of the Digital Information System as outlined above.

## **Regional meeting of Carmarthenshire, Ceredigion, Pembrokeshire and Powys PSBs and RPBs**

The annual regional meeting of the Carmarthenshire, Ceredigion, Pembrokeshire and Powys PSBs and the RPBs for West Wales and Powys took place on 4 November 2020, hosted by Ceredigion PSB. There were a series of presentations relating to key current regional matters:

- Digital Information System update
- RPB Working Together – an RPB perspective
- Strategic priorities and links to PSB – Hywel Dda Health Board
- Social and Green Solutions for Health Summit – January 2020 report
- Local Resilience Forum and the response to Covid-19
- Report from Police and Crime Commissioner



## Five Ways of Working

The PSB has embedded the five ways of working into its planning and working arrangements, aiming to consider the Five Ways of Working in all it does. This is evident in the projects which have been developed during the year.

### Long term



The importance of balancing short-term needs with the need to safeguard the ability to also meet long-term needs.

### Prevention



How acting to prevent problems occurring or getting worse may help public bodies meet their objectives.

### Integration



Considering how the public body's well-being objectives may impact upon each of the well-being goals, on their objectives, or on the objectives of other public bodies.

### Collaboration



Acting in collaboration with any other person (or different parts of the body itself) that could help the body to meet its well-being objectives.

### Involvement



The importance of involving people with an interest in achieving the well-being goals, and ensuring that those people reflect the diversity of the area which the body serves.

The town centre/community multi-agency/sector hubs initiative is looking at how better use can be made of the premises that PSB partners have. With likely changes to ways of working in the future, as it has been demonstrated how staff can successfully work from home during the pandemic, partners are **collaboratively** reviewing the buildings needed for their staff to work out of and to deliver services from. **Integration** is being discussed, looking at options to bring staff together from different organisations to work out of the same buildings, saving space and running costs.

A **long-term** approach is being considered to change the behaviour and culture of organisations and communities in **collaborative** approaches to opportunities in responding to the climate emergency. This is also a **preventative** approach to stop matters getting worse. This includes the climate resilience plan for Newcastle Emlyn that has been developed and is being progressed and the planned carbon reduction workshop.

The work in Tyisha **involving** the local community to address key issues of concern that matter to the local community continues and is beginning to have an impact on the regeneration of the area. Local people will benefit from living in a safer, more enjoyable place.

The tree planting initiative **involved** local members of the community volunteering to plant almost 2,350 trees, creating new woodland sites for all to enjoy now and in the **long-term** as the areas continue to develop.

The Early Years Integration Team is delivering a **preventative** approach, developing **integrated** working across professions and organisations working with families during the early years of their children's lives.

The Green Infrastructure initiative **involved** key stakeholders including the business community in the discussions.

**Preventative** action is being taken to tackle anti-social behaviour and crime to stop vulnerable people from becoming victims in a multi-agency, **collaborative**, targeted approach.



## Development areas for coming year

Other priority areas to be progressed:

- To prepare the next well-being assessment, aided by the new digital information system and engagement platform, by May 2022.
- To begin work to develop the new Well-being Plan, incorporating the learning from the Future Generations report.
- To ensure the delivery of our new priorities and actions as reviewed during the year and to continue working together as public sector partners to tackle the key issues facing Carmarthenshire as part of COVID-19 recovery.
- To review and ensure alignment and closer working with other regional strategic partnerships to ensure all opportunities are taken to engage and work with other regional partnerships.
- To continue to further integrate our work with the RPB with collaborative working to rationalise delivery arrangements and maximise the opportunities to implement both Plans.
- To develop the PSB's website to ensure it is an effective tool to give an insight into the working of the PSB and promote the collaborative efforts taking place and successes in delivering the Well-being Plan
- To develop a proposal for wider PSB communication channels to raise awareness among our communities of the work of the PSB, the actions being progressed and achievements to date.

